



## Assisted Living

The Nottingham's Assisted Living Residence offers additional support and care when needed. Our care planning and assessment process ensures that individual needs and preferences are incorporated into everything we do.

### Amenities include:

- Spacious apartments, including private bath and kitchenette
- Cable TV and Wi-Fi included
- Choice of furnished or non-furnished apartments
- Recreational programming with spiritual, cultural, physical activities, and community outings
- Proactive care management with quarterly care conferences
- Full use of The Nottingham Community including dining, events, exercise equipment and swimming pool

### Optional services include:

- Three meals a day
- Personal assistance services
- Medication supervision as directed by physician
- Transportation shuttle - 5 days per week
- Medical alert system
- Weekly linen and personal laundry service
- Weekly housekeeping

### Rental Plan Options:

#### Plan 1

- Continual assistance with medical equipment such as oxygen, humidifiers, CPAP, BIPAP, colostomy and Foley catheters.
- Routine maintenance of these items, ordering supplies and changing tanks and tubing.

#### Plan 2

- Assistance with bowel and or bladder incontinence for chronic, unmanaged incontinence and required scheduled assistance.
- Toileting schedules and safety checks.
- Additional housekeeping.

#### Plan 3

- A one (1) person assist will be provided to residents who chronically require physical assistance with ambulating and transferring.
- Transportation to medical appointments.
- Additional housekeeping.
- All services included in Package 1 and Package 2.

# Assisted Living Pricing Plans *Effective January 1, 2021*

**Application Fee:** \$3,900

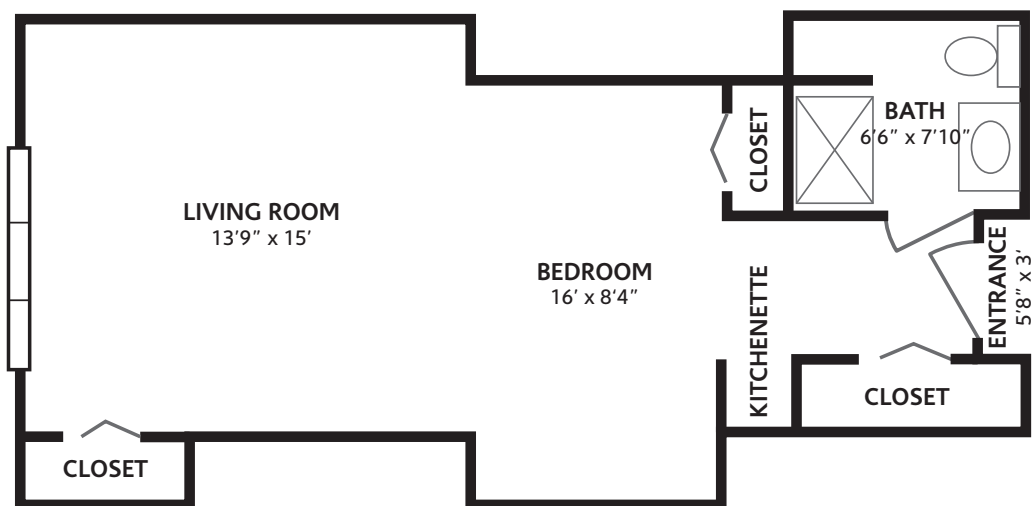
## Assisted Living—Monthly Fee

	Monthly Fee	Second Person Fee
<b>Studio</b> 300 sq. ft.	\$6,320	\$3,160
<b>Large Studio</b> 320 sq. ft.	\$6,425	\$3,215
<b>1 Bedroom</b> 375 sq. ft.	\$6,525	\$3,265

*Utilities are included*

## Enhanced Services (Optional)—Additional Monthly Fee

Package 1	Package 2	Package 3
\$1,000	\$2,000	\$4,000



**To learn more about our assisted living options at The Nottingham, please contact:**

Marcy Cole, Director of Sales & Marketing  
 315.413.3104 or [mcole@lorettosystem.org](mailto:mcole@lorettosystem.org)  
 1301 Nottingham Road, Jamesville, NY 13078  
 Or visit our website at [thenottingham.org](http://thenottingham.org)

